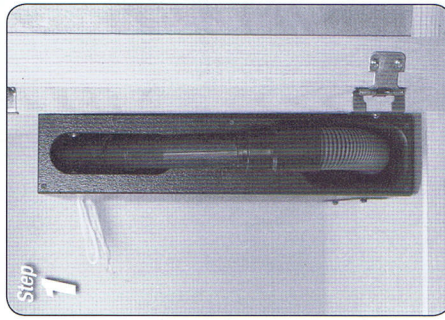
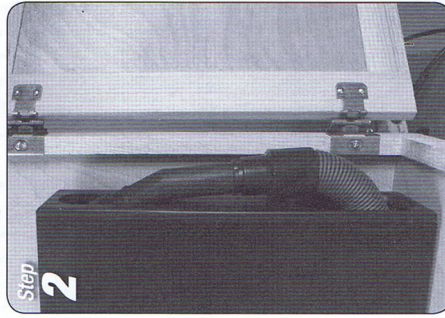


Positioning the unit.....



Step 1
Set the product inside the cabinet for positioning. The side of the unit should be lined up with the door frame opening to allow clearance for removing the hose handle without hitting the door frame.

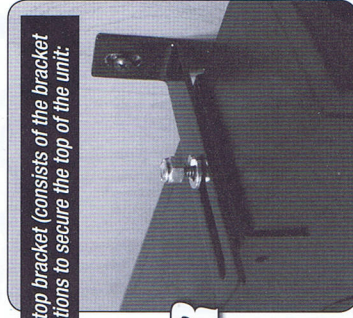


Step 2
From the side, the unit should be positioned as far forward as possible while still allowing the cabinet door to close without hitting the hose handle.



Step 3
Determine Position: position the top bracket (consists of the bracket and sliding arm). There are two options to secure the top of the unit:

OR

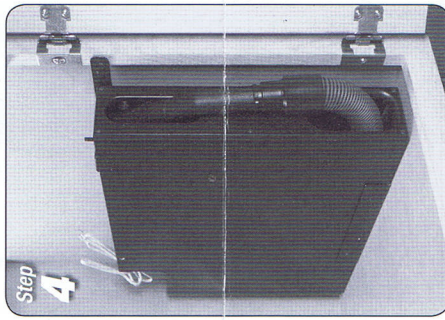


Secure the unit to the cabinet side wall. Pre-drill a pilot hole in the side wall before driving screw to prevent splitting the wood (use a 5/64 drill bit).

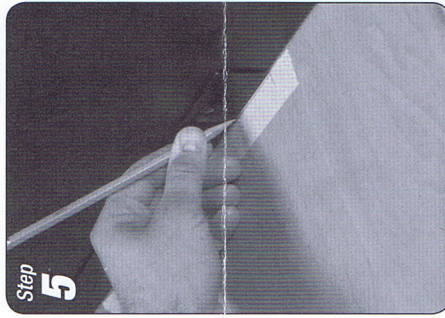
OR

Secure the unit to the door frame. Pre-drill a pilot hole in the door frame before driving screw to prevent splitting the wood (use a 5/64 drill bit).

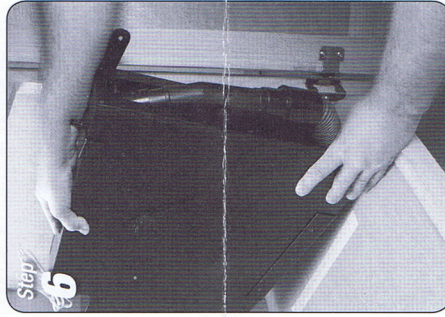
Do not insert screws at this time. The Vroom will need to be removed (see step 6).



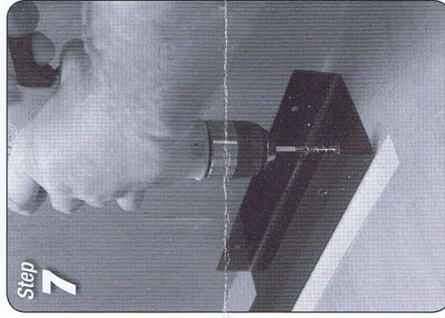
Step 4
Check to make sure that there is clearance for the door and proper hose operation.



Step 5
Positioning the Base Bracket. Position the unit and make reference marks for the bracket. (A piece of masking tape to mark on works well.)

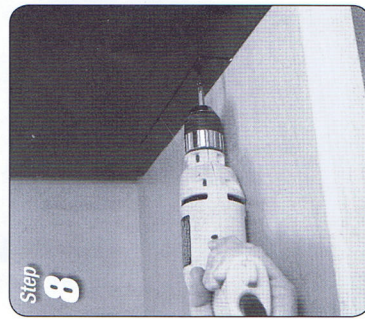


Remove the unit

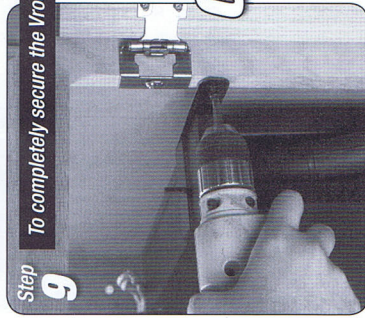


Step 7
Align the bracket to the reference marks and pre-drill the 2 holes. Install the 2 screws through the bracket into the floor of the cabinet.

Securing the unit.....



Step 8
Place the Vroom back into the bracket and properly position. Then use two black wood screws (provided) to secure the Vroom to the Base Bracket. **WARNING:** using oversized screws can damage the internal workings of the Vroom unit.



Step 9
To completely secure the Vroom there are two options:

OR



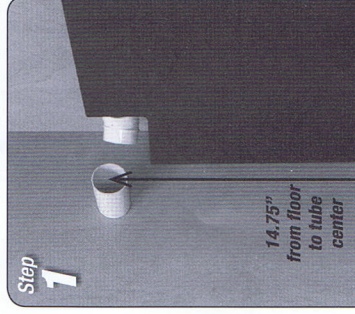
To secure to the door frame, use a black wood screw to secure the sliding arm (pre-drill; see step 3).

To secure to the side wall use a Phillips screw driver and a black wood screw (pre-drill; see step 3). **CAUTION:** Do not over tighten the screw.

Connecting to the Vacuum Line

"Through the wall" installations

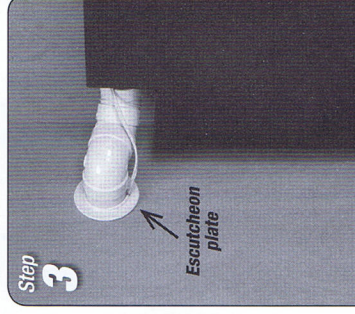
ATTENTION: DO NOT GLUE THE VACUUM LINE TO THE FITTING PROVIDED ON THE UNIT: IT IS A FRICTION FIT FOR EASY REMOVAL.



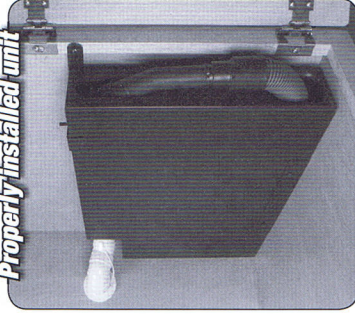
Step 1
With the unit in place trim out the stub (from your trunk line) by using tubing to tie into the Vroom.



Step 2
Dry fit your assembly with the escutcheon plate (label side down) and wire in place (the escutcheon plate is notched for the wire to run through it along side the tubing). Glue and assemble your fittings/tubing and attach to the trunk line. Do not glue the vacuum line to the black fitting on the unit. Attach the low voltage wires from the Vroom to the low voltage wires coming from the trunk line using wire nuts.



Step 3
Push any excess wire through the escutcheon plate.



Step 4
To test the unit, simply lift the handle out of the docking station until you feel the switch engage (90 degrees). This will turn on the central vacuum unit and activate the Vroom.

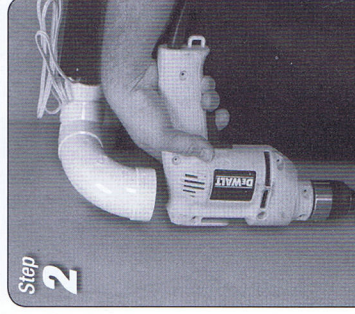
"Through the floor" & "Retrofit" installations:

It is always best to accurately measure for drilling considering all possible obstacles. Drill a pilot hole with 1/8" bit (long) and check from lower level to make sure you will be clearing those obstacles. Make sure you have access to the trunk line.

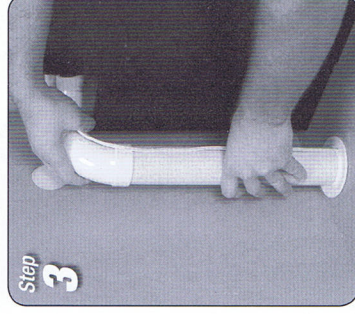
ATTENTION: Do not glue the vacuum line to the black fitting (provided) on the unit: it is a friction fit for easy removal.



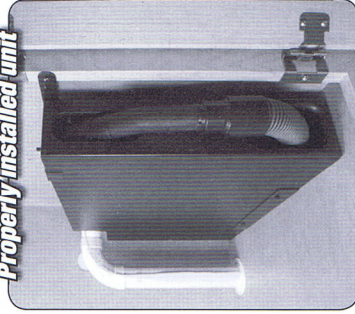
Step 1
Locate the path for your vacuum line from the trunk line and make reference marks for drilling. Drill a pilot hole to ensure a clear path below the cabinet. Check underneath to ensure there are no obstructions before drilling.



Step 2
Using a hole saw bore a 2-1/4" hole through the cabinet and the floor.



Step 3
Dry fit your combination of fittings/tubing to ensure good positioning. Remove your dry fit assembly, glue assembly and attach to the trunk line. Do not glue the vacuum line to the black fitting on the unit. Be sure to slide the escutcheon onto the tubing before gluing. Attach the low voltage wires from the Vroom to the trunk line using wire nuts.



Step 4
To test the unit, simply lift the handle out of the docking station until you feel the switch engage (90 degrees). This will turn on the central vacuum unit and activate the Vroom.